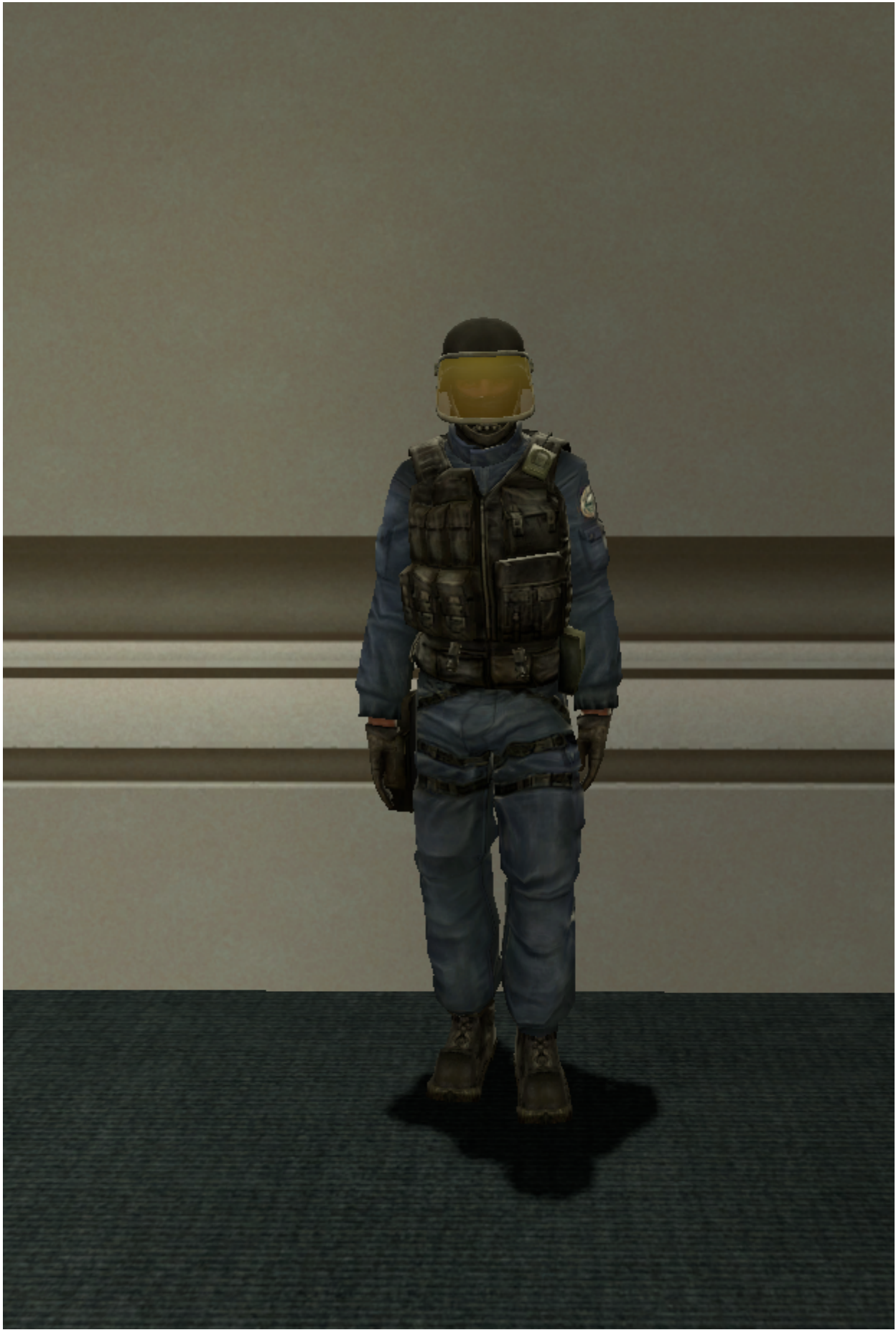


S.W.A.T Medic

- [Combat](#)
- [Passive](#)

Combat

Combat medic is to be up close to the action and help your fellow police. It has two unique features which are the Mass Heal which heals all police in a certain area and also comes with Adrenaline V12 which boosts your movement speed and gives you a boost of health for a short period.



Passive

The Passive Swat Medic class lets you heal the police force faster. You gain access to a faster med kit and you're also able to spawn entities which restore armor and health!

